



ReSource Center: Investing in the Future of Environmental Stewardship

Santa Barbara County continues to expand its legacy of environmental leadership with the ReSource Center, a new cutting-edge facility that is fundamentally redefining waste recovery. The ReSource Center converts commercial and residential waste into resources by recovering recyclable materials, transforming organics into landscape nutrients, and creating renewable energy in the process. With this new technology, approximately 60% of additional waste from our trash cans is diverted from the landfill bringing our region's diversion rate above 85% while significantly reducing greenhouse gas emissions.

The County of Santa Barbara and select cities made the bold decision to modestly increase rates for the purpose of investing in a cleaner future for our county. As our region continues to grow, the ReSource Center is an opportunity to prepare the next generation for responsible waste management and a healthier environment.

Thank you for investing in Santa Barbara County as a special place to live and work.



In Partnership with:



Serving 200,000 Residents:



Santa Barbara County Public Works



Carlyle A. Johnston
805.882.3617
CJohnst@cosbpw.net

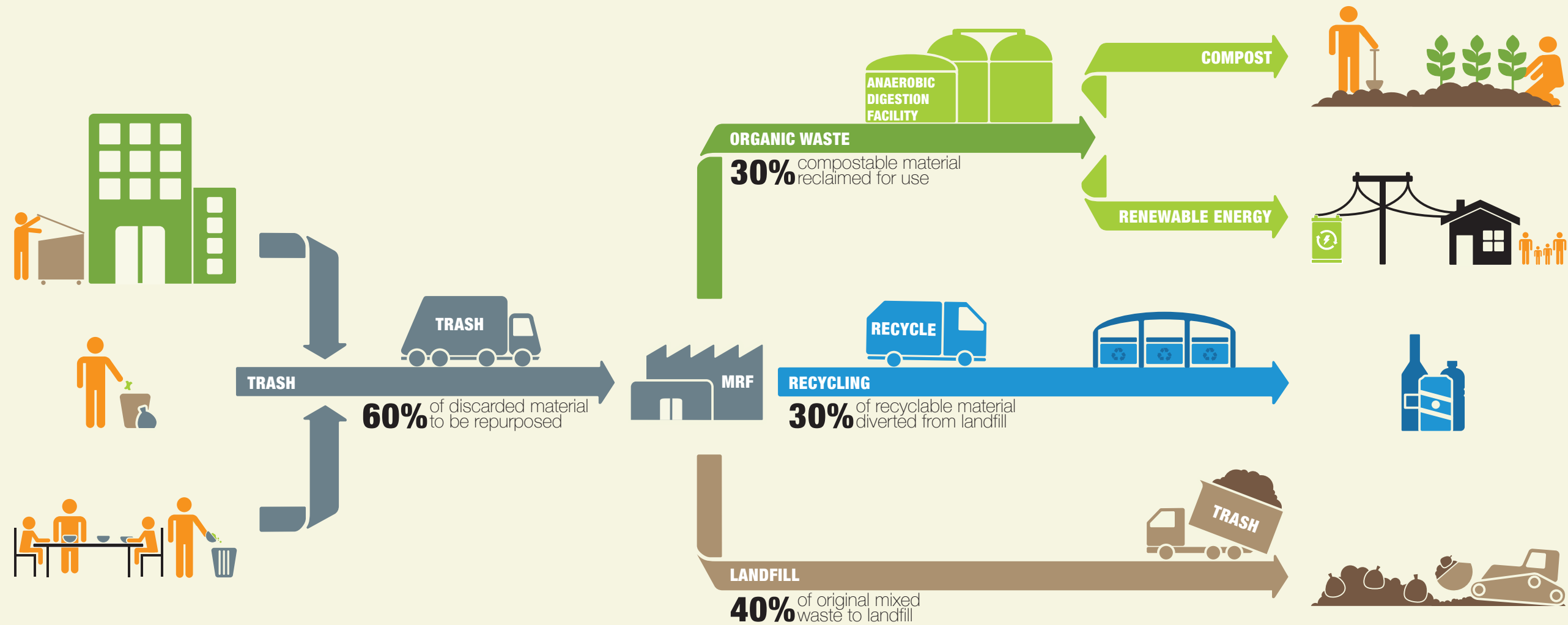
www.LessIsMore.org/ReSourceCenter



REDEFINING WASTE RECOVERY

Learn more about this new state-of-the-art waste management facility that diverts 60% of landfill waste, generates resources such as green energy and compost, and dramatically lowers our community's greenhouse gas emissions.

REDEFINING WASTE RECOVERY



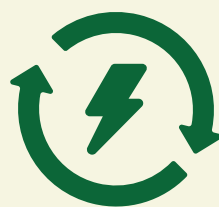
Reduces Waste

Diverts additional 60% of waste from landfill – bringing region above 85% diversion rate



Reduces GHG Emissions

Removes emissions equivalent to 28,668 cars annually



Generates Renewable Energy

Annual renewable energy generated to power 2,000 homes



Improves Air Quality

Captures methane gas and generates electricity with clean burning gas engines



Creates Jobs

Creates nearly 100 permanent living wage jobs



Meets or Exceeds State Mandates

Vital to achieving state-mandated GHG emission reductions, increasing recycling, and diverting organic waste